

KOBI NAZRUL

PRIMARY SCHOOL

Creating Opportunities

Building Aspirations

Inspiring Success



Settles Street,
London E1 1JP

www.kobinazrul.towerhamlets.sch.uk





Message from the Headteacher

We wish you a very warm welcome to our school. We hope as you read through our prospectus, you can see the warmth and connection of a close and thriving community and of the purposeful learning that takes place.

I hope you will find it reflects our school values, which underpin everything we do:

**Independence Confidence Ambition Respect Reflection
Enjoyment**

Including everybody is essential, and celebrating our differences helps us understand everyone around us better. We know we can all learn more when we work together and help each other.

School should be an experience. A memorable one for life; a place where children experience success and realise there are no limits to what they can achieve. Thankfully we have a committed staff team who have a relentless drive for high standards of learning and achievement as well as the care and compassion to make sure our children's well-being is at the heart of all we do. We listen carefully and work closely with the community to ensure we serve the needs of OUR community and OUR children. Together we are stronger.

If you would like further information, please contact our school office, we would be delighted to help. If you know any of our families already, have a chat to them; there's no better insight than that given from those who trust us with their children every day. If you don't, of course we can put you in touch with families who will be more than happy to meet you.

Best wishes,
Belinda King



Some key Staff



Belinda King
Headteacher
Designated
Safeguarding Lead



Cath Burns
Deputy
Headteacher



Aquedus Ali
School Business
Manager



Jusna Begum
Receptionist



Rujina Khanon
Admissions & Attendance



Tony Hill
Premises Manager



Rumina Bibi
Inclusion Leader



Ruth Gwyther
Inclusion Assistant



Amanda Thmpson
EYFS Leader

School Uniform

Uniform can be purchased online from the following companies:

[Uniform Link 1](#)

[Uniform Link 2](#)



Navy blue
trousers/Skirt



White shirt/polo shirt

Navy blue jumper/
cardigan

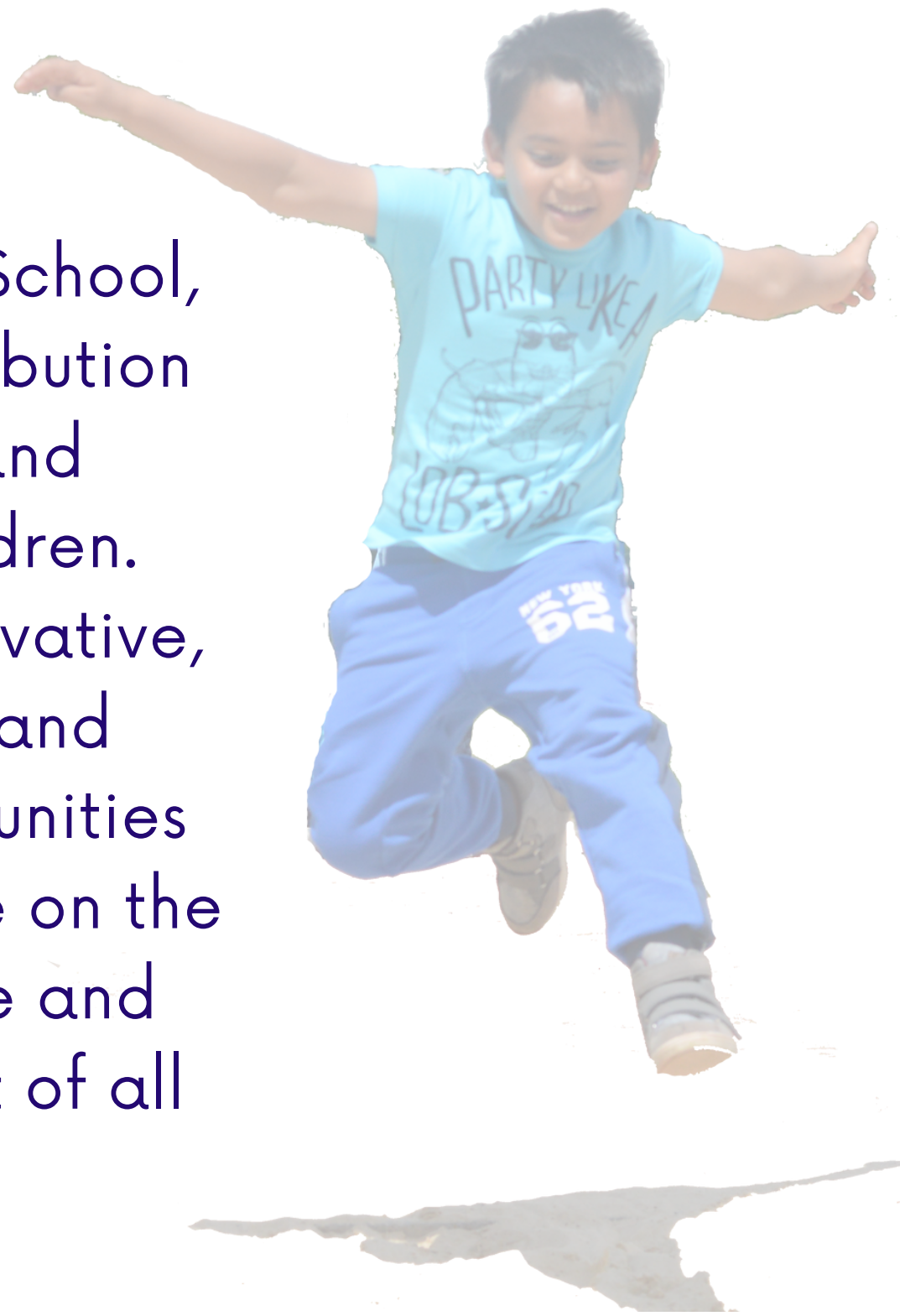


Black shoes



PE & Sports

At Kobi Nazrul Primary School, we recognise the contribution of PE to the health and well-being of the children. We believe that an innovative, varied PE curriculum and extra-curricular opportunities have a positive influence on the concentration, attitude and academic achievement of all our children.



Navy blue
tracksuit/leggings/
shorts



White t-shirt



Trainers/Plimsolls

The School Day

School starts at 8.45am

The school gates will open at 8.40am.

If you arrive after 8.50am, your child will be marked as late.

School ends at 3.15pm

The school gates will open at 3.10pm.

KS2 (Year 3, Year 4 Year 5 & Year 6) entrance and collection is in the KS2 playground. Please collect your children from their allocated doors.

EYFS (Nursery & Reception) & KS1 (Year 1 & 2) entrance in through the main gate. Please collect your children from their classrooms.

There are plenty of staff available at the gates each morning to help you answer any questions or just to have a chat.

Morning Break:

10.20am – 10.40am

Lunch:

EYFS: 11.45am – 12.45pm

KS1: 12.00pm – 1.00pm

KS2: 12.15pm – 1.15pm

8.45am



School
starts

3.15pm



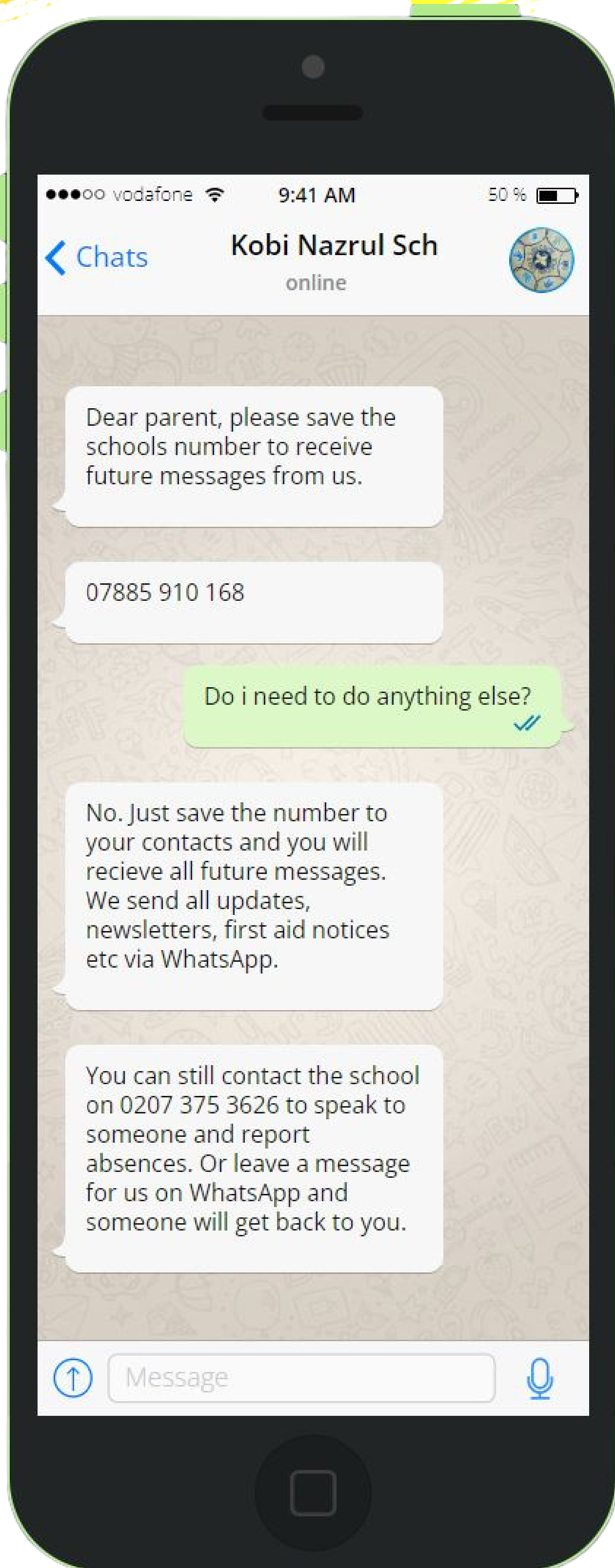
School
ends

The School Building

Collection/Drop off points below:



Contact & Messaging



School
number:

0207 375
3626

Please call the
school number to
report absences
and to speak to
someone.



School
mobile:

07885
910 168

Click the above
link and save the
school mobile
number to
recieve all
communications.
Send us non-
urgent messages
and we will get
back to you.



School email:
admin@kobinazrul.towerhamets.sch.uk

Attendance & Lateness



At Kobi Nazrul we work in partnership with parents and carers to ensure a high percentage of attendance and a low level of lateness for all children.

Every lesson makes a difference for your child. At Kobi Nazrul we make the most of all the time to ensure we provide the very best teaching and support for your child.

Children can very quickly fall behind if they are regularly late or miss days at school.

Key information:

School gates close at 8.50am. Children will be marked late after this time.

We set high targets for attendance and aim for all children to have attendance of above 97% across the school year. Attendance and lateness are monitored weekly and where a concern is raised, a meeting with a member of the school leadership team will be made to discuss reasons and offer support and advice.

The school has adopted Tower Hamlets' policy on holidays or extended leave during term time. If permission is not given and you take your child out of school for an extended holiday of 3 days or more then the Local Authority will issue a fine of £60 per parent per child.

More than 20 lates in a school term may lead to the local authority issuing a fine.

We understand that it can be difficult at times to ensure your child is in school on time every day. Please come and talk to us. We will do all we can to support you and your child.



Every minute, every hour, every day counts

Lunch & Healthy Eating

Kobi Nazrul has the **GOLD** healthy school accreditation which means:

- Children get to enjoy healthy meals* at lunchtime with optional daily salad from the salad bar and freshly cut up fruit for dessert.
- During playtimes, EYFS and KS1 children receive free fruit and milk.
- Children learn about how to be healthy and the effect healthy living has on the body and mind.
- We actively encourage and promote healthy lifestyles with our families and the community.

A great way to encourage healthy habits with your child is to walk/cycle/scooter to school every day; this is a great opportunity to be active. All of these will help us live long, happy and healthy lives!

At Kobi Nazrul healthy snacks are enjoyed during after school clubs. Please ensure that if your child has an after school club, your snack is healthy. A healthy snack could be fruit or vegetables with water to drink. Crisps, chocolates and drinks will not be allowed. To ensure consistency, only fruit and veg are allowed as after school club snacks. No other food will be permitted to be eaten at school.

* All food provided at school is Halal

If your child has any allergies, you must inform us immediately so that we can prepare a careplan for your child.



School Lunch Menu



Mihn
Head Cook



Becky Last
Healthy Schools Lead

Children with Additional Needs

At Kobi Nazrul School, we feel that all children's contributions to school life should be valued and we seek to develop the self-esteem of every child. Not all children with disabilities have special educational needs and equally, not all children with special educational needs meet the definition of disability. Children with SEND have 'special educational needs' if they have any difficulty in accessing education and need any special provision to be made for them; that is, anything that is additional to or different from what is normally available in school.

Our school is an inclusive school and we aim to address all children's individual needs and support their development in the most appropriate way possible. We believe that all children should be listened to and given a voice for their wants and needs.

Our planning and provision is person centred, ensuring that all children's voices are heard and their feelings and thoughts are valued.

By creating a strong support team around a child, we promote a culture of collaboration, discussion, and informed shared strategies. We see parents as partners and ensure they actively contribute to discussions around next steps and children's targets. We adopt a graduated approach with four stages of action: assess, plan, do and review. This continual process ensures that support is constantly reviewed and adjusted where possible so that pupils can make good progress and secure good outcomes.

Our school strives to provide an engaging and exciting curriculum to ensure the best possible progress for all of our pupils, whatever their needs or abilities. We endeavour to enable every child to participate as fully as possible in all elements of the wider curriculum. We actively encourage all children to participate in sporting activities. We ensure that all children attend school trips and residential visits with support as appropriate.

Our aim is to ensure high quality provision for all children with SEND with high expectations so that they can achieve highly. We provide additional and/or different provision for children with a range of needs, including cognition and learning; sensory and physical needs; communication and interaction; social, emotional and mental health.

If you think your child needs extra support in school,
please come in and have a chat with me,
Rumina



Early Years - Nursery & Reception

Welcome



The Early Years Team would like to welcome you and your child to Kobi Nazrul's Early Years Foundation Stage, where you can expect a committed partnership with the school in providing an excellent early years education. We hope that you and your child will quickly feel part of the school community.

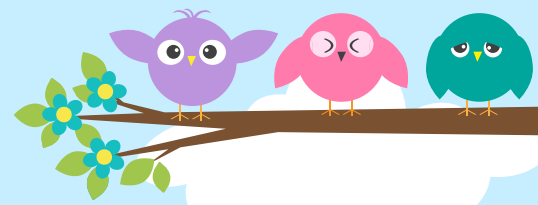
We are committed to providing a safe and stimulating learning environment offering a broad and balanced curriculum where our children can develop their skills, knowledge and confidence through a wide range of experiences.

We believe that working in partnership with all parents, carers and families is fundamental to ensuring our children get the most from their time in Early Years.

Amanda



Early Years - Nursery & Reception



EYFS Times Home Visits

Nursery - Full-time (working parents only)

Start: 8.45am

Lunch: 11.45pm - 12.15pm

Finish: 3.15pm

Nursery - Part time A.M

Start: 8.45am

Finish: 11.45am

Nursery - Part time P.M

Start: 1.15pm

Finish 3.15pm

Reception

Start: 8.45am

Lunch: 11.45pm - 12.45pm

Finish: 3.15pm

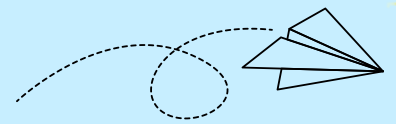
We arrange home visits to help your child in feeling secure when they arrive at school and to help us get to know you and your child in a familiar environment. During the visit you will have the opportunity to share any information that you feel is relevant in enabling us to best support your child in school as well as raise any concerns that you may have.





Early Years - Nursery & Reception

Settling in



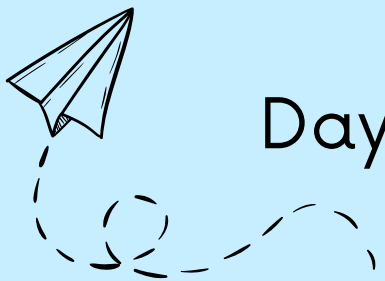
To ensure that your child has a supportive transition experience into our Early Years, we will invite you and your nursery child to join us for 'Stay and Play' sessions. This will give an opportunity for you to get familiar with our class spaces for an afternoon and talk to Early Years staff.

For Nursery children, we have a 'settling in procedure' which is as follows:

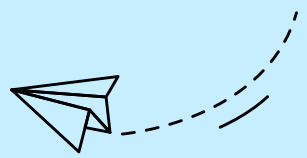
Day 1- Stay for an hour with parent/guardian

Day 2- Stay for 2 hours (with parent/guardian if needed)

Day 3- Stay the morning (or for a shorter time depending on the child's needs)



All children are different and some may need a longer time to settle than others. We take a flexible approach to settling children in and will work with you and your child to decide what is best.



Early Years - Nursery & Reception

$1+2=3$

What are the areas of learning and development?



The Early Years Foundation Stage (EYFS) curriculum outlines the learning and development from birth and continues into the Reception Class until the age of five. There are seven areas of learning. We plan an exciting, motivating and challenging curriculum based on each child's needs, interests, and stages of development across the seven areas of learning to enable the children to achieve the Early Learning Goals by the end of Reception year.



The seven areas of learning are:

Personal, Social and Emotional Development

Physical Development

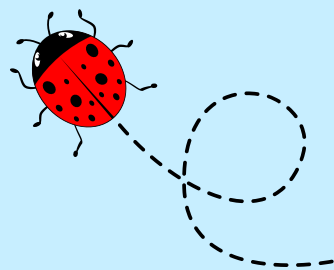
Communication and Language

Literacy

Mathematics

Understanding the World

Expressive Arts and Design



Your child will also have the opportunity to develop the 'Characteristics of Effective Learning' which are:

| | | |
|----------------------------------------------------------------------------------------|--------------------------------------------------------------------------------------------------|----------------------------------------------------------------------|
| Playing and Exploring | Active Learning | Creating and Critical Thinking |
| Finding out and exploring Playing with what they know Being willing to have a go | Being involved and concentrating Enjoying achieving what they set out to do Keeping trying | Having their own ideas Making links Choosing ways to do things |





Early Years - Nursery & Reception

What does a day in Early Years Look Like?

Your child will be welcomed at the door by a member of the Early Years team every day.

A combination of adult led sessions and child initiated activities are planned for during the week across the seven areas outlined to support learning and development. Short carpet sessions – when the children gather together with the adults – happen every day to support communication and language, literacy and maths skills. Children also take part in storytelling and acting, rhyme times, Philosophy for Children sessions and sessions to support physical development – sometimes led by our P.E specialist. There is also lots of time for children to choose activities which stem from their own interests and fascinations.

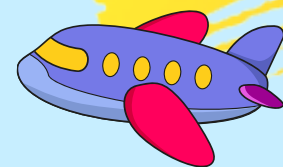
Lunchtime

At Kobi Nazrul we encourage our children to enjoy a supervised hot lunch together in our school dining hall. Children in our full-time Nursery and Reception classes have lunch at 11:45 am in the dining hall.

Fruit, water and milk are made available throughout the day.



Early Years - Nursery & Reception



Why is 'child initiated play' timetabled?

We believe that play, both indoors and outdoors is an important way in which young children learn. It can be both enjoyable and challenging. Through play and with support from adults, children will be developing crucial skills across all learning areas, as well as developing the characteristics of effective learning and working towards achieving the Early Learning Goals.

Your child will have access to a wide range of experiences and resources during their time in the Early Years – some of which are listed below (this is not an exhaustive list):

Indoors

Sand, water, clay, dough, painting, gluing, cutting, drawing, writing, role play, block play, building/making things with a variety of equipment, cooking, working on the computer, talk around books, listening to stories/tapes, musical instruments.

Outdoors

Climbing, balancing equipment, construction with large blocks, boxes, wheeled equipment, hoops, balls, gardening, woodwork, weaving, digging in earth, play in the mud kitchen and in the large sand pit.

These types of activities allow children to:

- explore using all of their senses, as well as challenge their physical abilities
- take risks in a safe environment
- develop their spoken language as they talk about their experiences

These are all very important aspects of young children's learning and development.





Early Years - Nursery & Reception



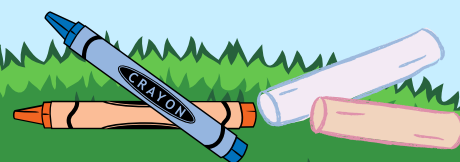
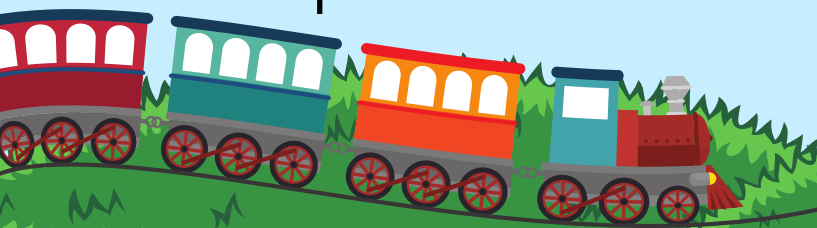
How can I help my child prepare for starting school?

Here are some of the things you could do at home to support your child:

- Talk to your child about your daily experiences together
- Tell and read stories together
- Sing rhymes and songs together
- Count together and notice numbers and shapes in the environment
- Notice letters and words in books and signs in and around the environment with your child
- Use pencils and crayons to draw pictures together
- Take your child to the park to experience, running, climbing and other physical activities

At Kobi Nazrul, we encourage our children to be **independent**. Here are some ways you could support independence at home:

- Encourage your child to put on and take off their own coat/clothing
- Allow your child to use jugs to pour water into cups
- Encourage your child to use words to tell you what they need
- Support your child in taking responsibility for their belongings e.g looking after books or putting toys away
- Encourage your child to use the toilet independently (unless there is a medical need. Children are expected to be toilet trained before they start).



Early Years - Nursery & Reception

What about school uniform?

Uniform can be purchased online from the following companies:

[Uniform Link 1](#)

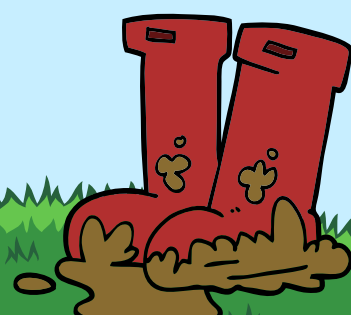
[Uniform Link 2](#)

Navy blue trousers /dress/ skirt
White shirt or polo shirt
Navy blue sweatshirt or cardigan
White socks
Black shoes

*Warm weather - blue checked dress

We have sets of aprons, waterproof suits and wellington boots in school so that children can enjoy playing in wet weather and can get involved in water play during the school day.

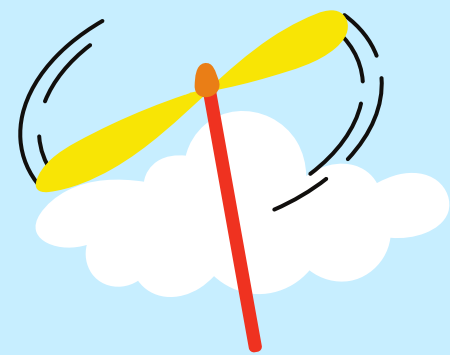
We would encourage you to bring a set of spare clothing into school in case your child needs to change for any reason. We also have limited sets of clean spare clothing in school. If your child happens to need to use school spare clothing, please return the clothing back to school as soon as possible.





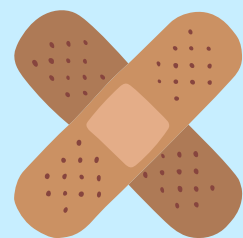
Early Years - Nursery & Reception

Health and Safety and Sickness



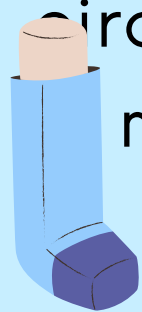
First Aid

We have trained paediatric first aiders in the setting. If your child experiences minor incidents such as small cuts, bruises or grazes, they will be seen by a first aider and you will be informed via WhatsApp by the end of the school day. In the event of serious injury or injuries to the head, parents/carers will be contacted immediately using the emergency contact details that you have supplied. Accidents are recorded – including bumps, grazes and scratches – so that we can inform you continually monitor safety across school.



Medicines

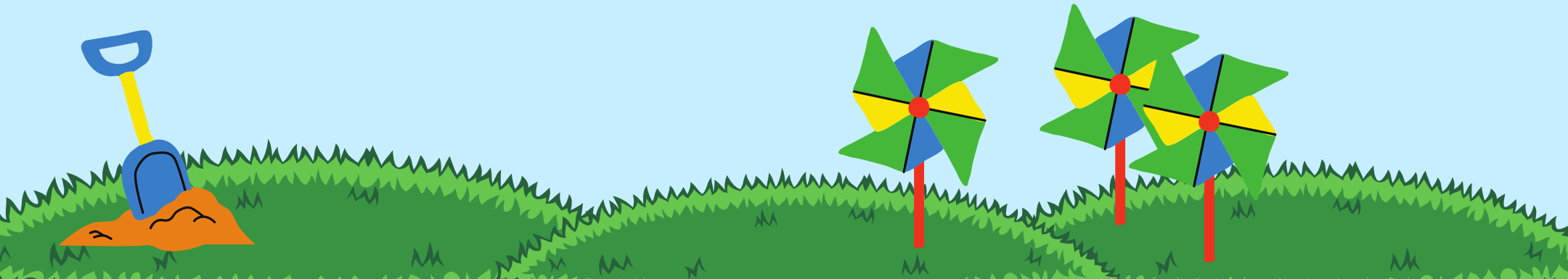
If your child has been given/prescribed medication, please let us know. It is preferred that parents and carers administer medication, however in some circumstances; it may be possible for staff to administer medication with written consent. Please speak to a member of the Early Years team regarding the administering of medicines.



Sickness

If your child is feeling unwell, please do give us a call and we can give you further advice.

If your child happens to fall ill during the school day, you will be contacted by a member of staff.





Early Years - Nursery & Reception

Safeguarding

Arrival and collection

Your child will be welcomed as they arrive by a member of our staff team and will be registered as they arrive. A responsible adult needs to bring your child to and from the school. Please make sure a member of staff has seen you and your child before you leave.

In order to keep all the children safe, you must inform a staff member if your child is to be collected by someone other than yourself. Please provide the name of the person and if possible, introduce the person to staff.

Designated Safeguarding Leaders

A child's safety is paramount and staff have a statutory duty to refer any concerns to the designated safeguarding leads. We urge parents to discuss worries or concerns with the safeguarding leads so that we can keep our children safe. At our school these are: Belinda King - Headteacher, Cath Burns - Deputy Headteacher and Rumina Bibi - Inclusion Leader.

Any safeguarding concerns raised by staff are reported to safeguarding leaders.



Contact details

We look forward to welcoming your child to our school!

If you have any further enquiries or questions about the school, please get in contact:

Aquedus Ali – School Business Manager

Amanda Thompson – EYFS Leader

Belinda King - Headteacher

School contact details:



07885 910 168



@kobi_primary



Kobi Nazrul Primary



0207 375 3626



admin@kobinazrul.towerhamlets.sch.uk



Kobi Nazrul School, Settles Street, E1 1JP

